



WV WESTWOODLEBER

**WV WESTWOODLEBER**  
LET US GUIDE YOU HOME

Lampits, Hoddesdon, EN11 8EF  
Guide price £250,000



## Lampits, Hoddesdon, EN11 8EF

Westwood Leber are delighted to bring to the market this well-presented two-bedroom apartment, ideally situated in the popular Lampits development in Hoddesdon.

Offering bright and well-proportioned accommodation throughout, the property comprises a welcoming entrance hall leading into a spacious lounge/diner, providing an excellent space for both relaxing and entertaining. The separate fitted kitchen is thoughtfully arranged, offering ample worktop and storage space.

The apartment boasts two good-sized bedrooms, with the principal bedroom offering generous proportions and the second bedroom providing flexibility for guests, home working or additional storage. A modern family bathroom completes the internal accommodation, all presented in a clean and well-maintained condition.

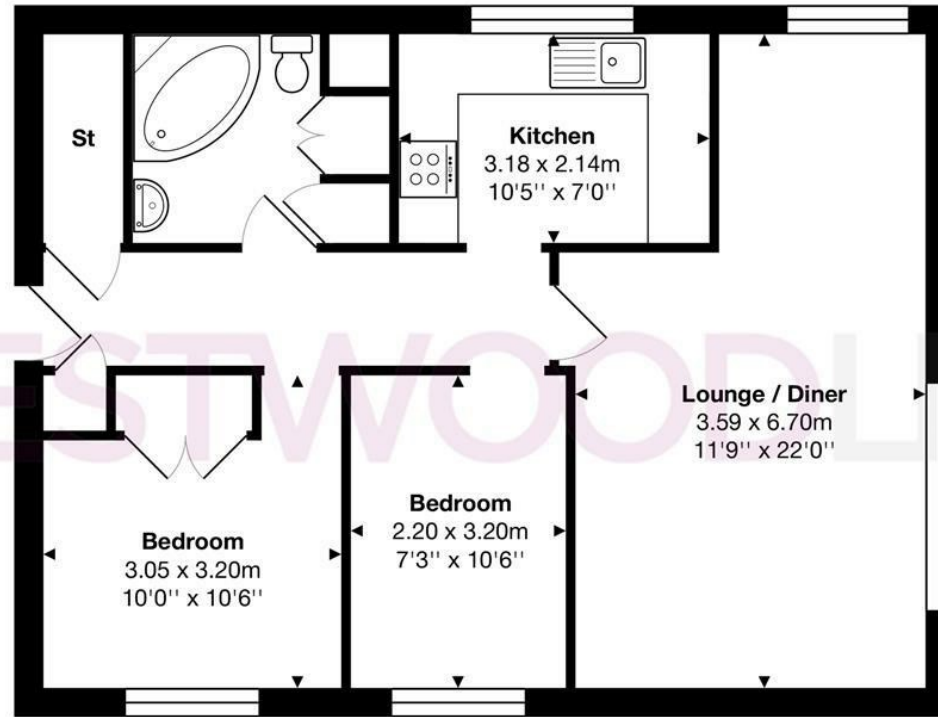
Further benefits include communal parking, a garage en bloc, and the added advantage of a recently installed boiler in 2024, ensuring improved efficiency and peace of mind.

Ideally positioned within easy reach of Hoddesdon town centre, with its range of shops, restaurants and transport links, this attractive apartment would make an ideal first-time purchase, investment opportunity or downsizing option. Early viewing is highly recommended.



**WESTWOODLEBER**

**WESTWOODLEBER**  
LET US GUIDE YOU HOME



Total Area: approx. 60.5 m<sup>2</sup> ... 652 ft<sup>2</sup>

THE FLOORPLAN IS FOR ILLUSTRATIVE PURPOSES ONLY AND IS NOT TO SCALE.  
 Measurements and features are approximate and may differ from the actual property. Verify all details independently; no liability is accepted for errors or omissions.

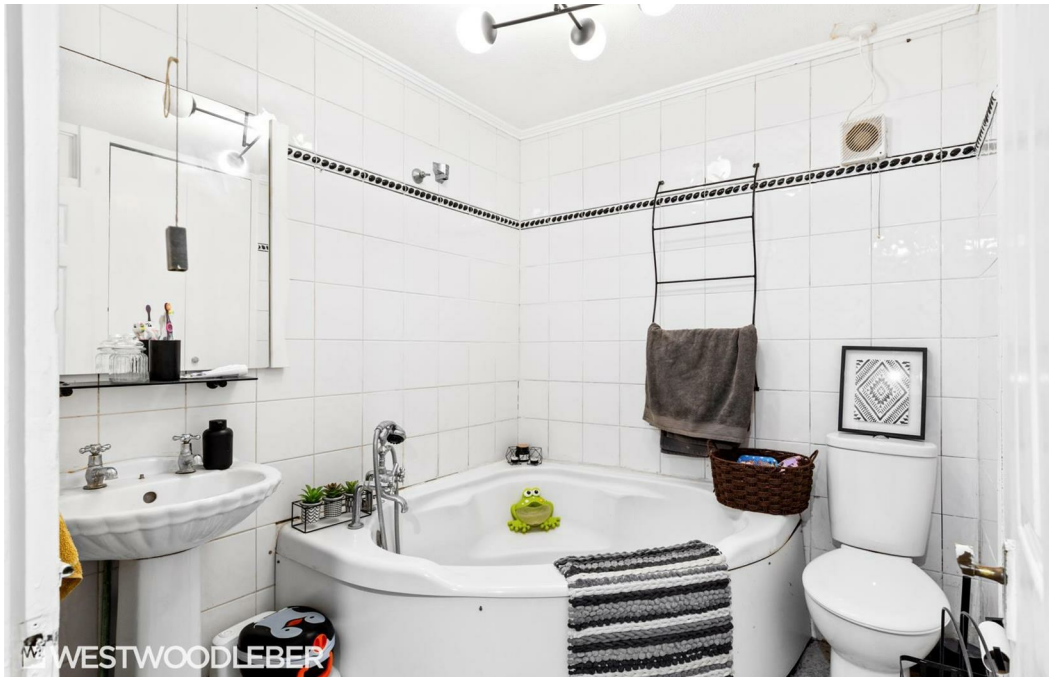
Property marketing provided by [www.fotomarketing.co.uk](http://www.fotomarketing.co.uk)



WESTWOODLEBER



WESTWOODLEBER



WESTWOODLEBER



WESTWOODLEBER





WESTWOODLEBER



WESTWOODLEBER



WESTWOODLEBER



WESTWOODLEBER